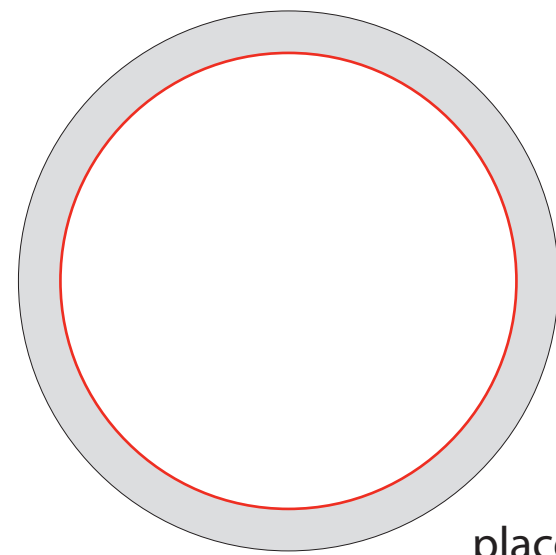
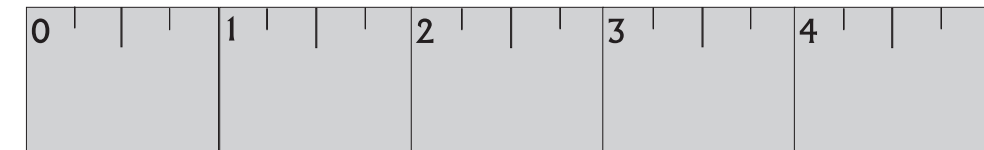
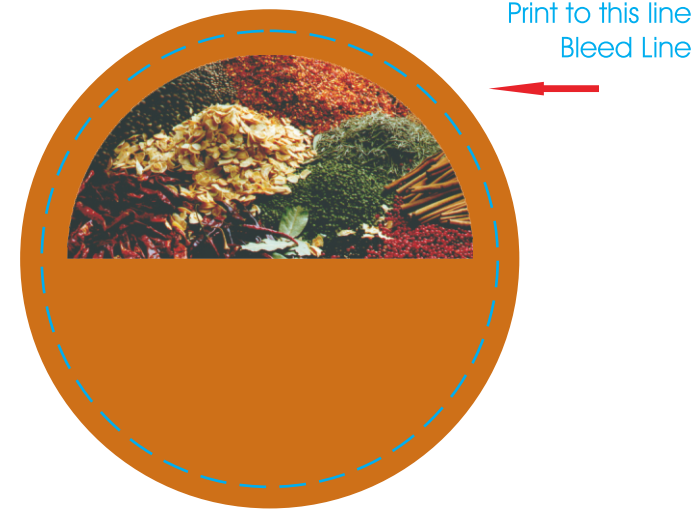


Beef & Burger STOCK

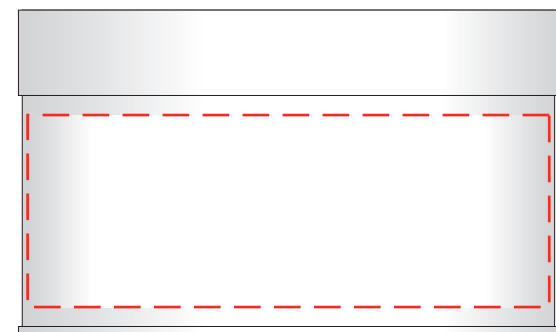
BODY WRAP AND LID LABEL



placement
on tin



Actual Size (100%)



PRODUCT DIMENSIONS: 2.81"W X 1.69"H

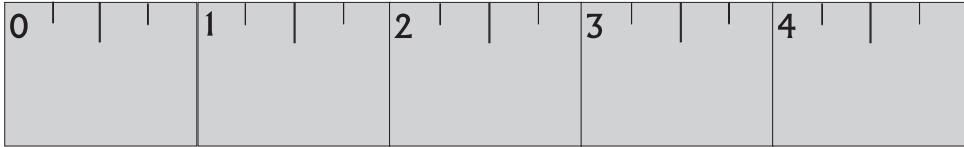
LABEL DIMENSIONS:
LID: 2.375" DIAMETER CIRCLE
BODY WRAP: 9.30"W X 1.00"H



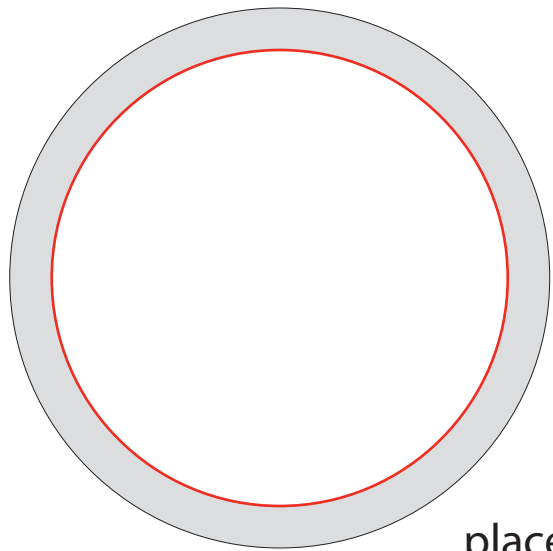
- Red Layout Lines Do NOT Print.

Chicken & Poultry STOCK

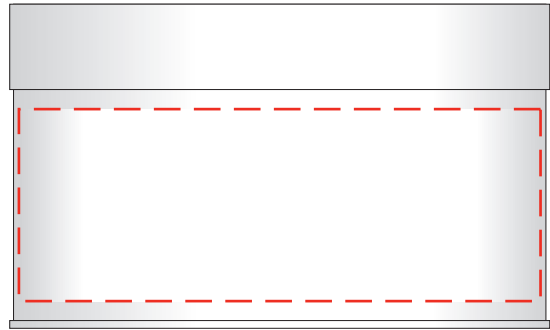
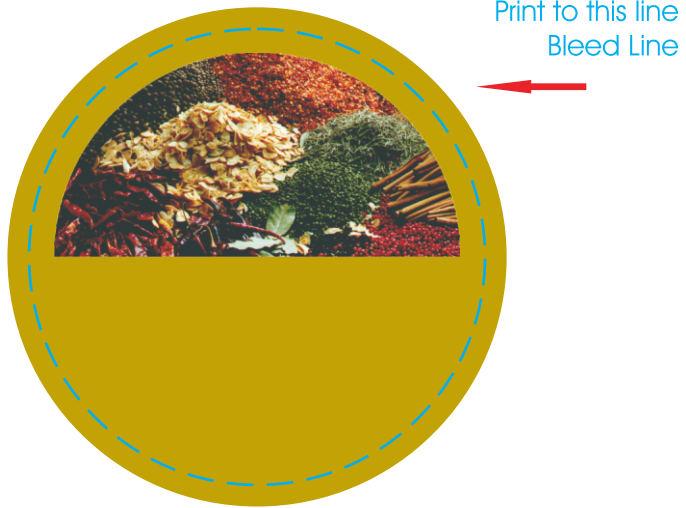
BODY WRAP AND LID LABEL



Actual Size (100%)



placement on tin



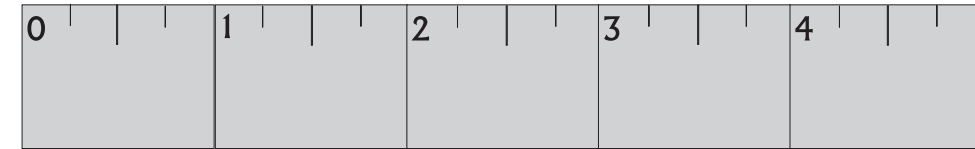
PRODUCT DIMENSIONS: 2.81"W X 1.69"H

LABEL DIMENSIONS:
LID: 2.375" DIAMETER CIRCLE
BODY WRAP: 9.30"W X 1.00"H

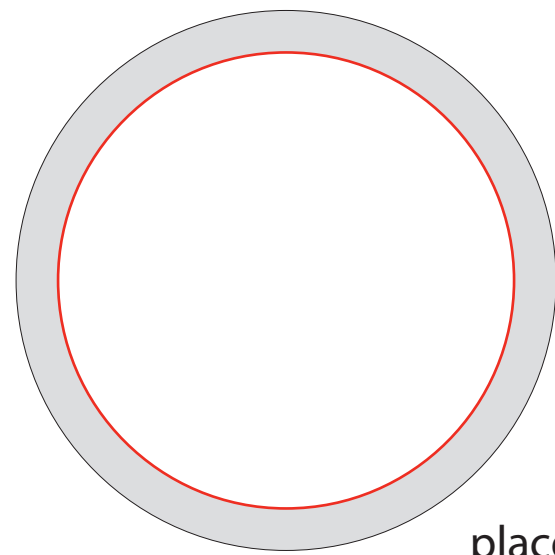
 - Red Layout Lines Do NOT Print.

Veggie STOCK

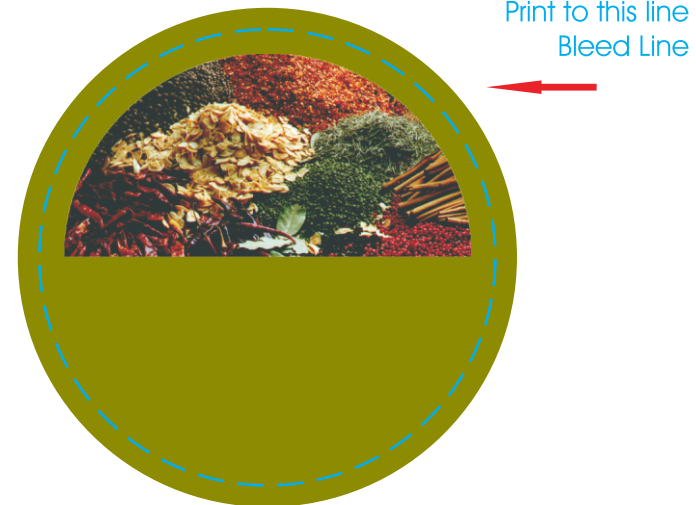
BODY WRAP AND LID LABEL



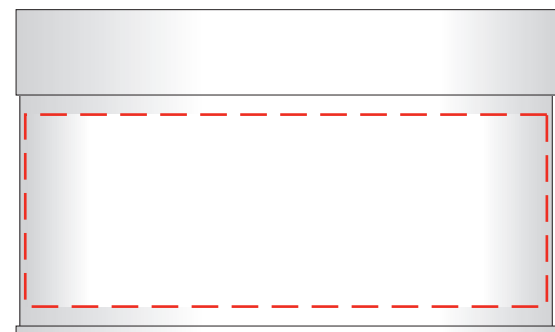
Actual Size (100%)



placement
on tin



Print to this line
Bleed Line



Print to this line
Bleed Line

PRODUCT DIMENSIONS: 2.81"W X 1.69"H

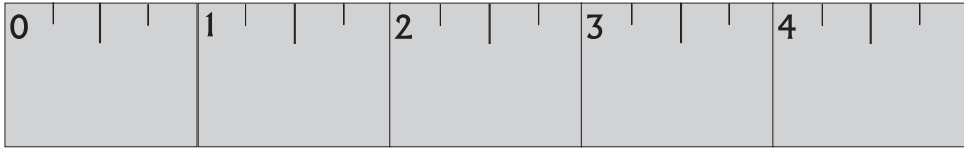
LABEL DIMENSIONS:
LID: 2.375" DIAMETER CIRCLE
BODY WRAP: 9.30"W X 1.00"H



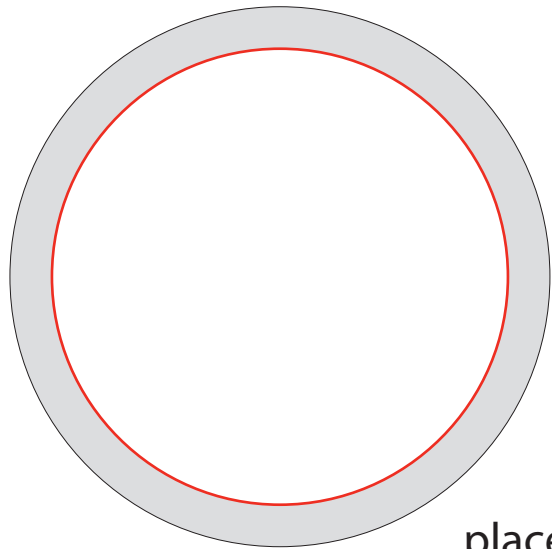
- Red Layout Lines Do NOT Print.

Fish & Seafood STOCK

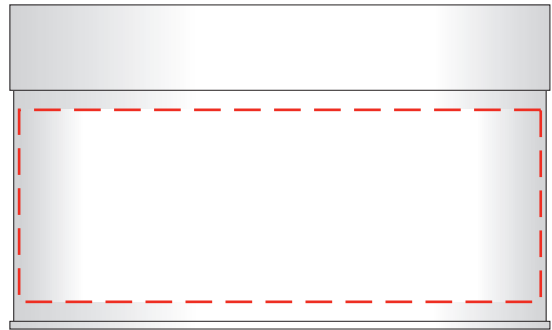
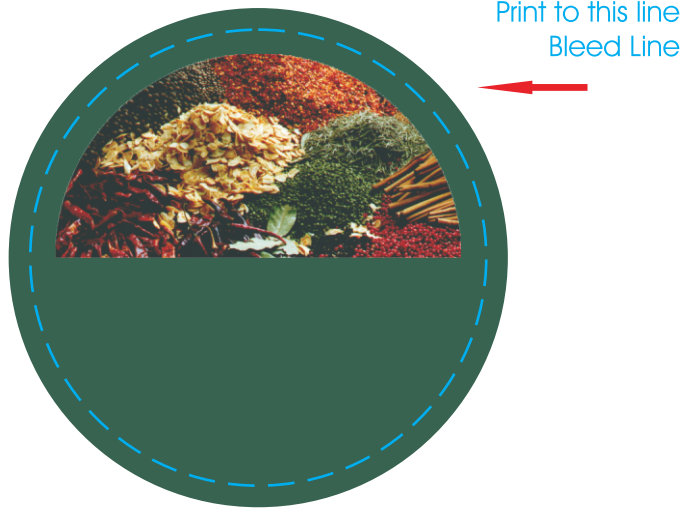
BODY WRAP AND LID LABEL



Actual Size (100%)



placement
on tin



PRODUCT DIMENSIONS: 2.81"W X 1.69"H

LABEL DIMENSIONS:
LID: 2.375" DIAMETER CIRCLE
BODY WRAP: 9.30"W X 1.00"H

 - Red Layout Lines Do NOT Print.